



PROMOBIOMASSE is a cross-border cooperation project directed at promoting the forest bio-mass energy market in the SUDOE territory (southwestern Europe).

*What challenges are addressed?*

The Promobiomasse project aims to overcome the difficulties of the biomass energy market.

- Destructuring of supply
- Division of the land into smallholdings
- Inefficient exploitation
- Insufficient or unknown demand.

*What actions are being implemented?*

- Good Practices are being studied.
- Based on these good practices, the **SUSTAINABLE MANAGEMENT MODEL** is prepared, relating to the supply and demand for the SUDOE territory, based on the “**SHORT CIRCUIT**” in which supply and demand are close together.
- **PILOT SCHEMES** are being developed, based on the model.

# Interreg Sudoe



## PROMOBIOMASSE

European Regional Development Fund

Networking for the development of an integrated model for sustainable forest biomass management in a short-circuit, applicable to mountain areas of the SUDOE territory.

### FUNDING

Promobiomasse is 75% co-funded by the Interreg SUDOE program through the European Regional Development Fund (ERDF).

### PARTNERS



[www.promobiomasse.eu](http://www.promobiomasse.eu)

[www.interreg-sudoe.eu](http://www.interreg-sudoe.eu)

# Interreg Sudoe



## PROMOBIOMASSE

European Regional Development Fund

*The renewable energy growing by your side*



### PARTNERS





## Plant biomass

*The renewable energy source that is close at hand*

Plant biomass can be used to generate energy. How? Plants use solar energy for photosynthesis. During this process, they take carbon dioxide (CO<sub>2</sub>) and convert it into oxygen (O<sub>2</sub>). During the combustion of plant biomass, carbon dioxide CO<sub>2</sub> is released, which is absorbed by the plants and the biomass biological cycle starts over again.

### This form of energy offers numerous advantages:

- It is a **RENEWABLE ENERGY**: The product used is sourced from sustainably-managed woods, where the felling of trees must involve regeneration.
- It **GENERATES EMPLOYMENT AND PROMOTES ACTIVITY IN RURAL AREAS**. It is calculated that thermal biomass creates 135 jobs for every 10,000 consumers, compared to the 9 jobs created by gasoil and natural gas. Many of these jobs are to be found in the rural environment.
- **LESS EXTERNAL ENERGY DEPENDENCE**, given the use of own resources.
- Helps to **REDUCE THE RISK OF FIRES**.



## Network project



# PROMOBIOMASSE

• Agência Regional de Energia e Ambiente do Interior (ENERAREA)

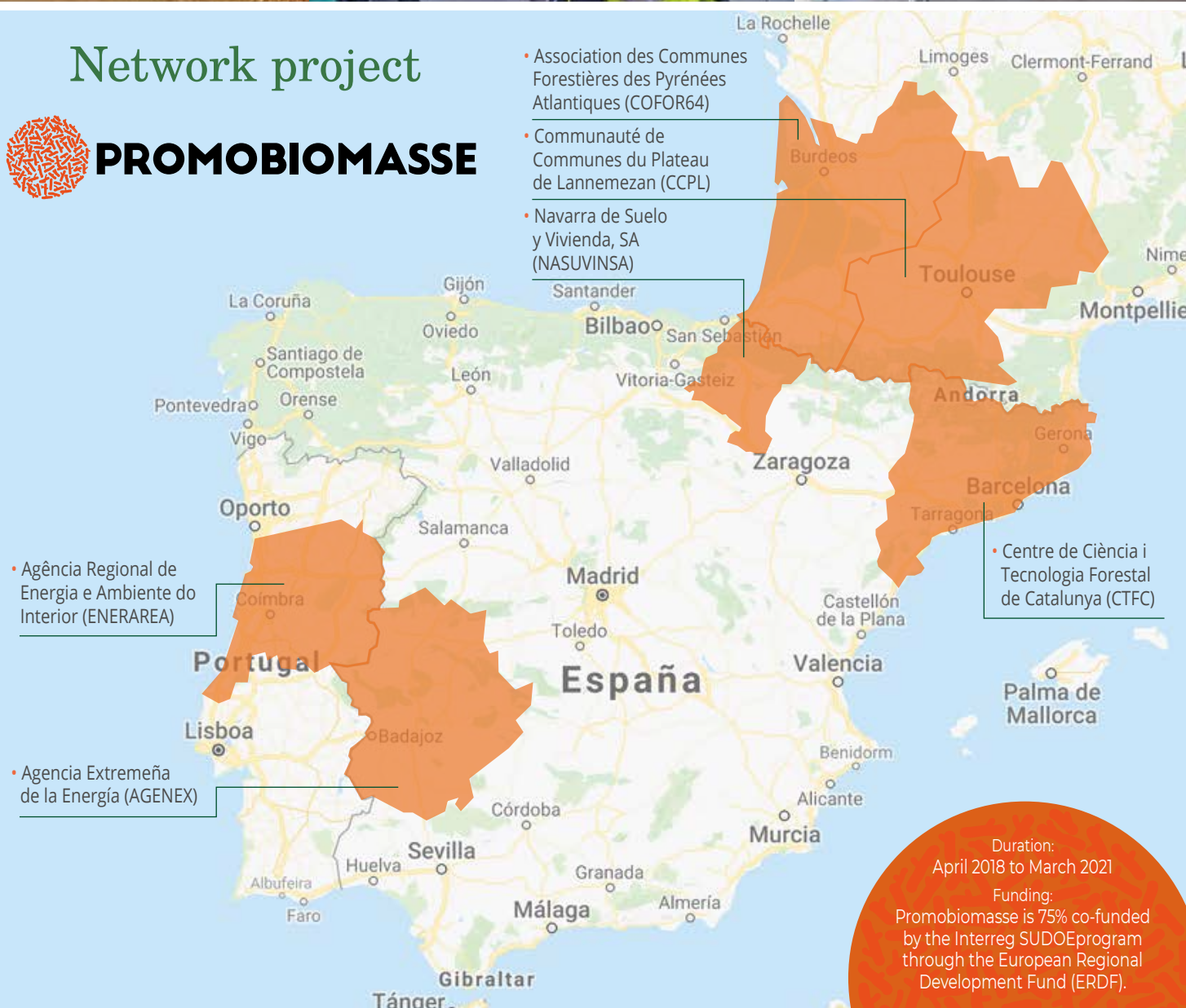
• Agencia Extremeña de la Energía (AGENEX)

• Association des Communes Forestières des Pyrénées Atlantiques (COFOR64)

• Communauté de Communes du Plateau de Lannemezan (CCPL)

• Navarra de Suelo y Vivienda, SA (NASUVINSA)

• Centre de Ciència i Tecnologia Forestal de Catalunya (CTFC)



Duration:  
April 2018 to March 2021

Funding:  
Promobiomasse is 75% co-funded by the Interreg SUDOE program through the European Regional Development Fund (ERDF).